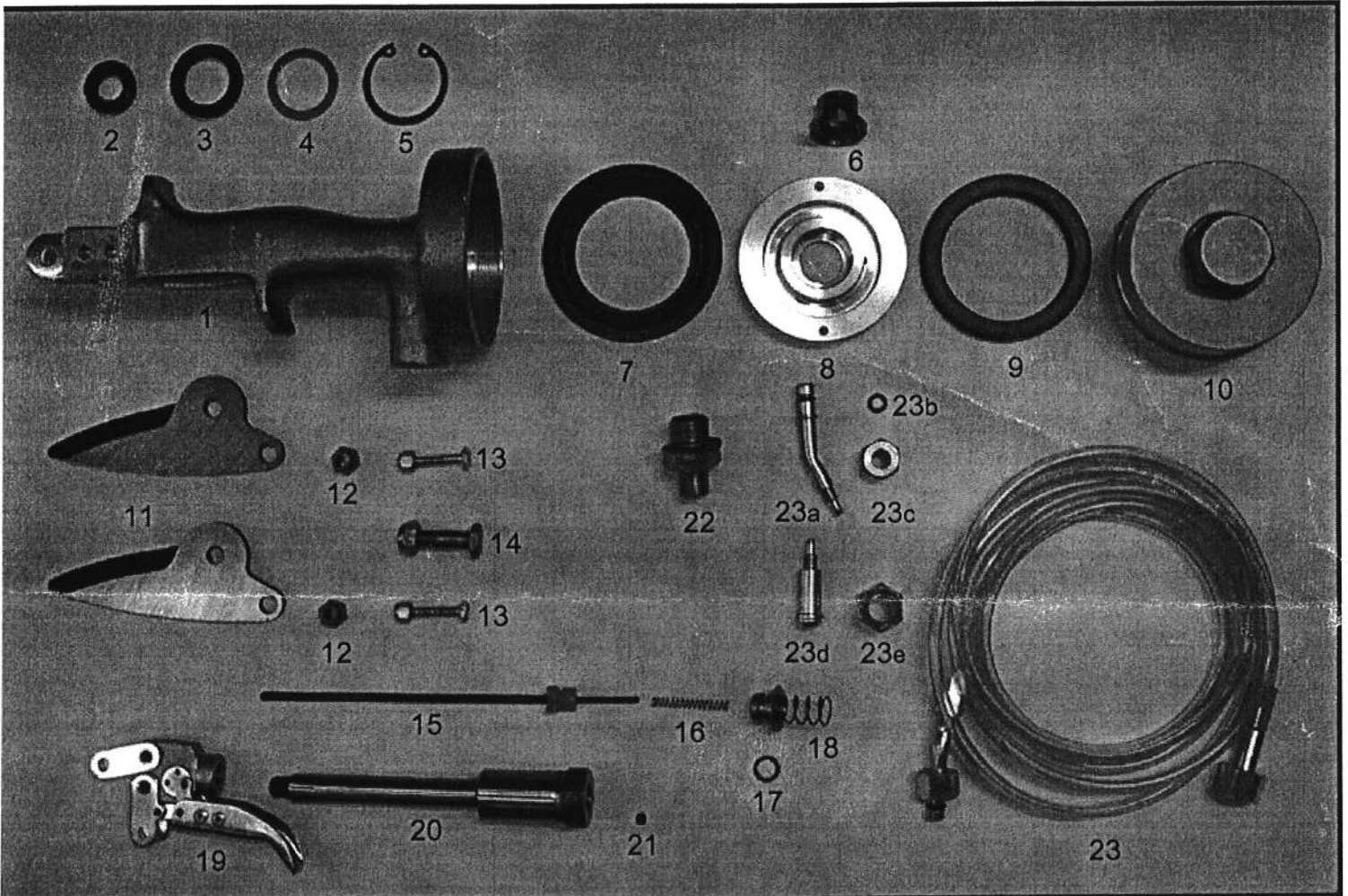




POWER PARER

Air Powered Sheep Hoof Paring Shears

Replacement Parts List



When ordering replacement parts, firstly identify the part in the illustration above, and then refer to it by its photograph number. The part description is ascertained from the list on the reverse side of this leaflet. Replacement parts should then be ordered from the dealer who supplied the tool or from:
 Leader Products Pty Ltd www.leaderproducts.com.au address list below.

Victoria	465 Hume Highway, Craigieburn 3064 (PO Box 42 Craigieburn 3064)	03 9308 2355
New South Wales	Unit 5, 57, Douglas Mawson Rd, Dubbo 2830 (PO Box W139 Dubbo 2834)	02 6882 7995 1800 025 371
Queensland	Unit 2, 24 Carroll St, Toowoomba 4350 (PO Box 9083 Wilsonton 4350)	07 4633 1662
South Australia	Unit 3, Simper Crescent, Mt Barker 5251	08 8391 2011
West Australia	82 Robinson Ave, Belmont 6104	08 9277 5150 1800 199 127
New Zealand	Unit 1, 42 Ellice Rd, Glenfield, Auckland	09 444 6180

Replacement Parts List – Power Parer

Photo No.	Part No. PPR	Description
1	0106	Body assembly, with nose pieces and bronze bush
2	0201	Seal - small
3	0301	Seal - medium
4	0401	Steel washer
5	0501	Circlip washer
6	0801	Valve cap
7	0601	Buffer washer
8	0701	Piston with grub screw
9	1001	Seal - large
10	0901	Cylinder
11	1101	Blades (2 per tool)
12	1401	Eccentric bush (2 per tool)
13	1301/3	Bolt and locknut for eccentric bush (2 per tool)
14	1201/2	Bolt and locknut for blade pivot
15	1504	Exhaust valve rod with nylon valve
16	1601	Exhaust valve spring
17	1701	Exhaust valve seat 'O' ring
18	1805	Exhaust valve seat and spring
19	1917	Toggle/trigger assembly
20	2001	Piston rod
21	2101	Inlet valve ball
22	2202	Filter bush assembly complete
22a*	2201	Filter bush
22b*	2402	Filter mesh inserts (2 per tool)
22c*	2401	Filter foam
22d*	2501	Filter retainer circlip
22e*	2301	Fibre washer
23	3304	Air hose assembly complete
23a	3401	Air hose nipple, tool end
23b	3501	Air hose nipple 'O' ring
23c	3601	Air hose nipple nut, tool end
23d	3701	Air hose nipple supply end
23e	3801	Air hose nipple nut, supply end, for 1/4" B.S.P.
23f*	3301	Air hose 1.5 metres long
23g*	3302	Air hose nut (2 per tool)

* These items are not shown individually in the photograph.

Manufactured in Australia by:

Jasdane Engineering Pty Ltd

5, 8~12 Pascal Road, Seaford, Victoria 3198, Australia

☎ +61 (0) 3 9782 4995

☎ +61 3 9782 4866

✉ andrew@jasdane.com.au