



INSTRUCTIONS FOR USE OF THE DOWNLOAD APPLICATION FOR THE LEADER ROYAL READER



DOWNLOADING THE APPLICATION (For Windows Only)

Go to the Leader Products NZ website and select “Downloads”

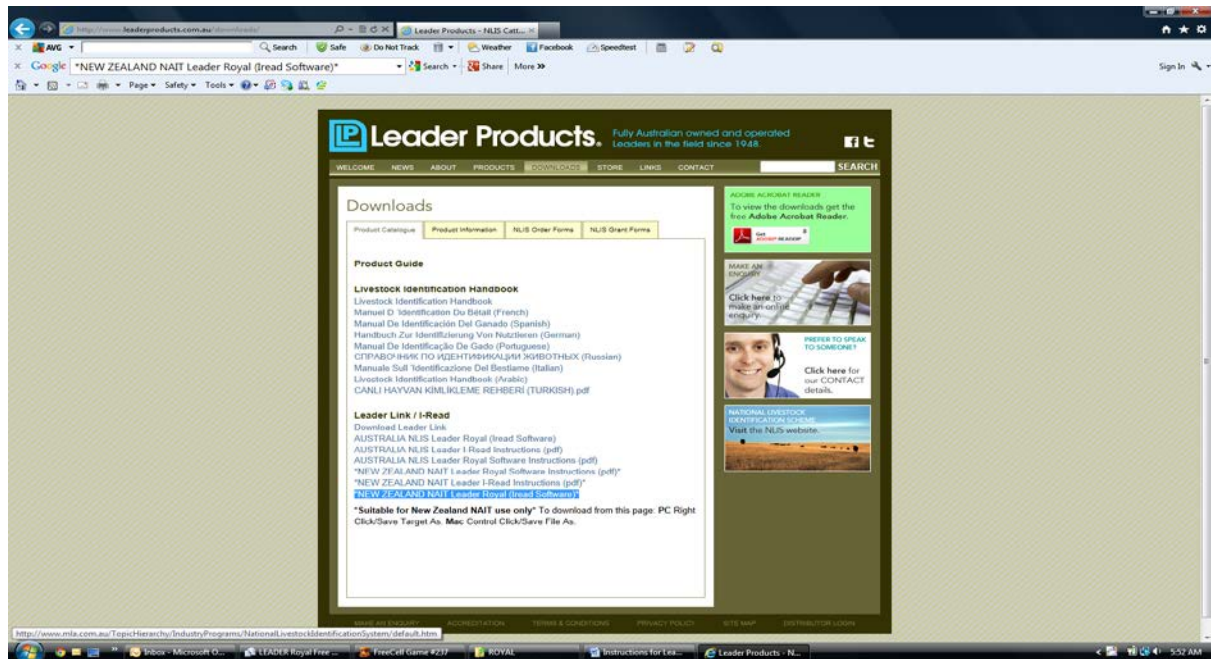
http://www.leaderproducts.co.nz/Download_Catalogue.cfm (Not suitable for MAC)

At the bottom of the page select the Leader Royal link

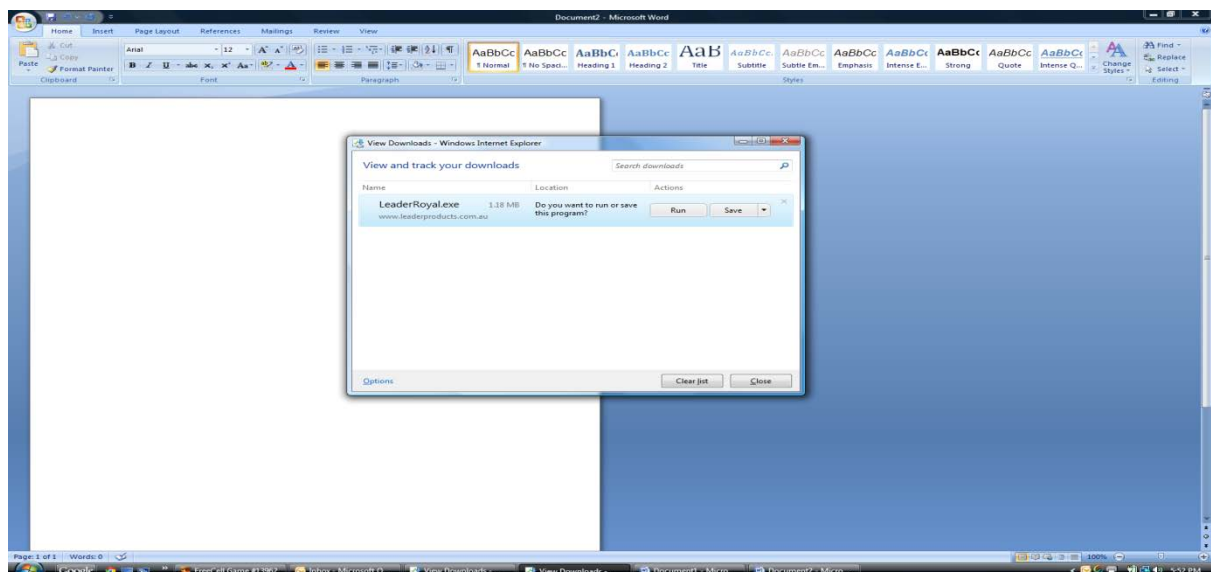
NEW ZEALAND NAIT [Leader Royal \(Iread Software\) & Leader Royal Instructions \(pdf\)](#)

At the bottom of the list, select the software download

[NEW ZEALAND NAIT Leader Royal \(IRead software\)](#)

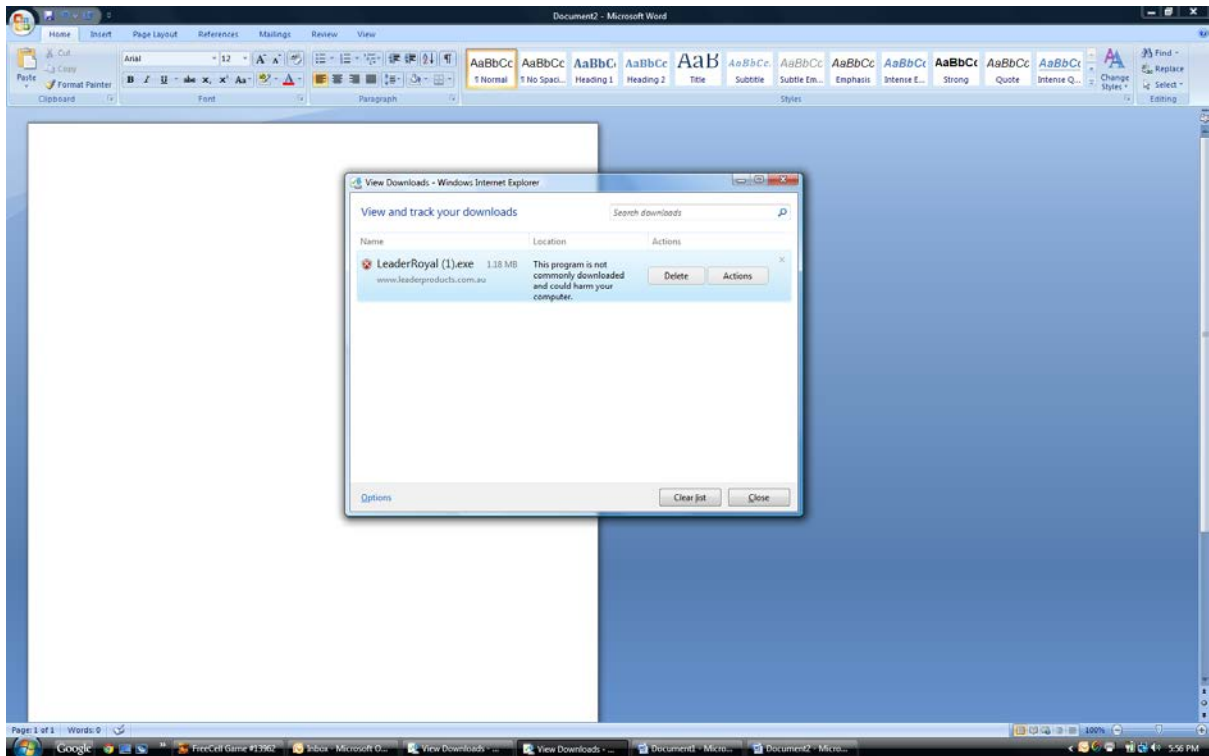


This should open a screen asking permission to download the program



Click “Save” from this menu

The security screen below should appear



Select “Actions” and then “More Options” at the bottom of this screen. Select “Run anyway” and then “Allow”

This should download the application to your computer and put a “Leader Royal” icon on your screen.

New users may get a prompt saying the program needs .NET Frame 4 to be able to proceed.

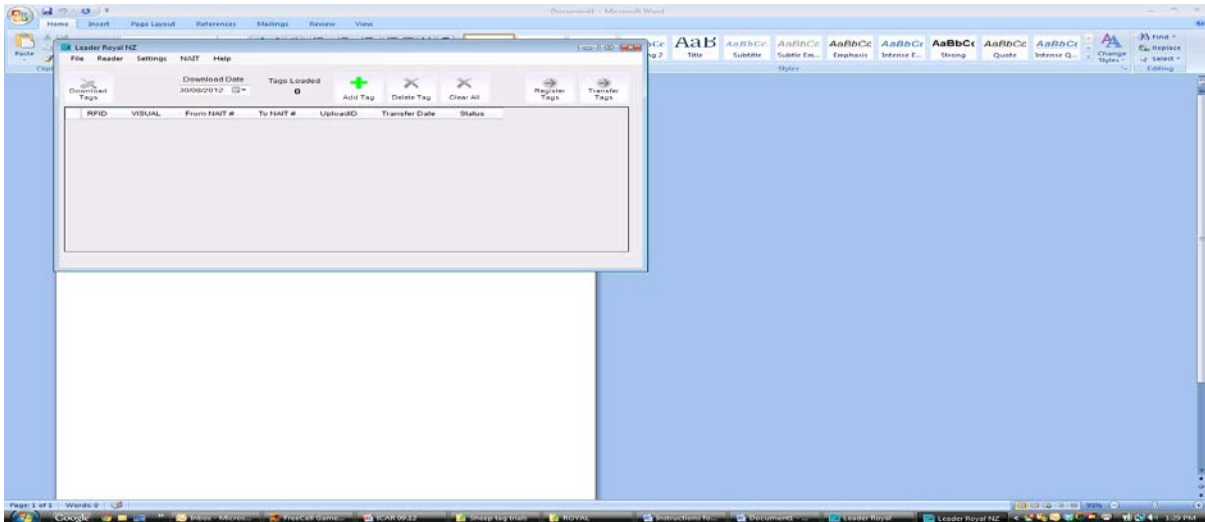
.NET Framework is a Microsoft program which is automatically up dated on most computers. Occasionally, there may be a need to update this manually. This can be done with the link: www.microsoft.com/download/en/details.aspx?id=17113

You will need to run this to complete downloading LEADER ROYAL program - but only if prompted.

USING THE SOFTWARE

DOWNLOADING THE READER MEMORY

Open the “Leader Royal NZ” application. The main screen should appear

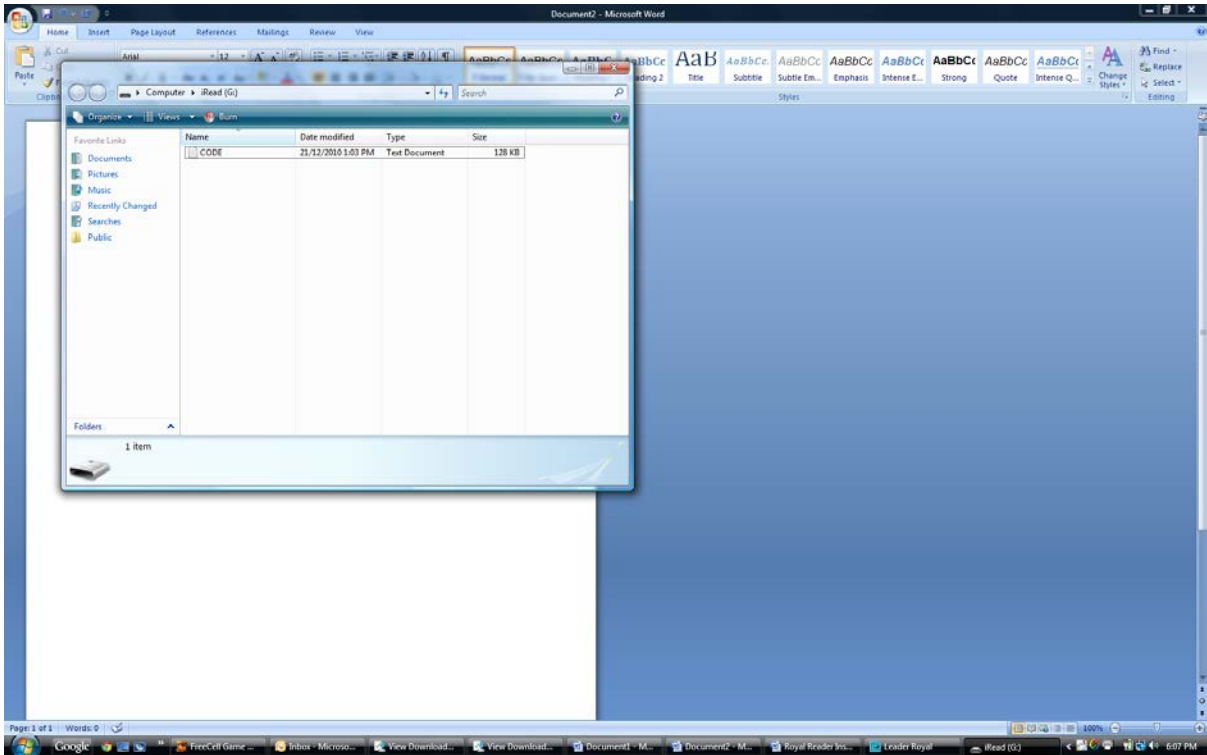


Plug the reader into the computer USB port using the download cable supplied



Turn on the reader.

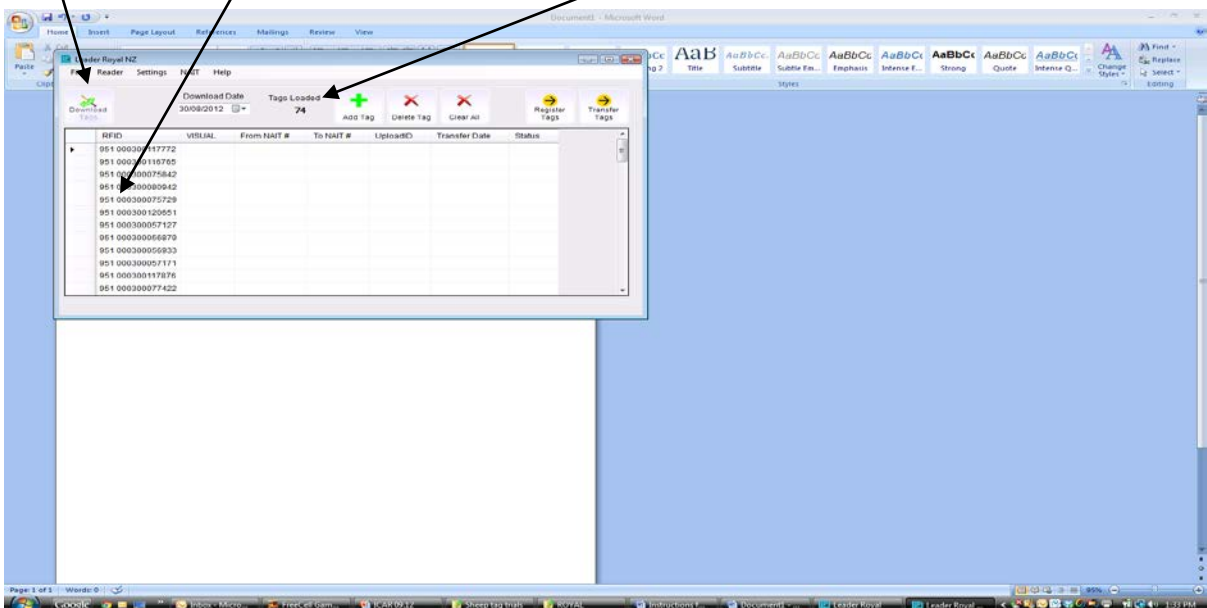
Depending on the computer configuration, an automatic download to a text file may appear. Close this screen



On the Leader Royal screen, the arrow on the “Download Tags” icon will now show green

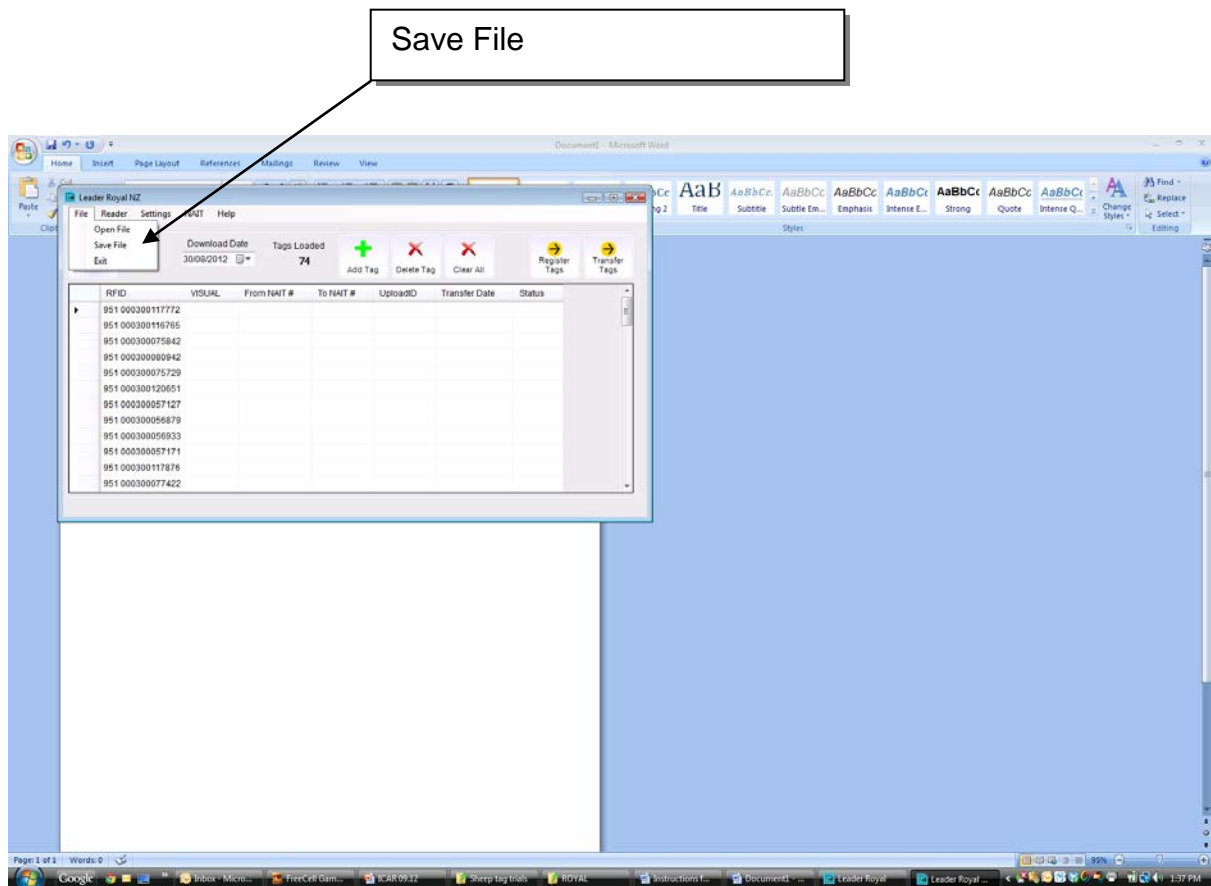
Click on this “Download Tags” icon and all the tag numbers in the reader memory will display. The count of the downloaded tags will show as “Tags Loaded”

Download Tags Icon Downloaded tag numbers Number of tags downloaded



SAVING A RECORD

If you wish to save a record of the downloaded tags, click “File” and then “Save File”



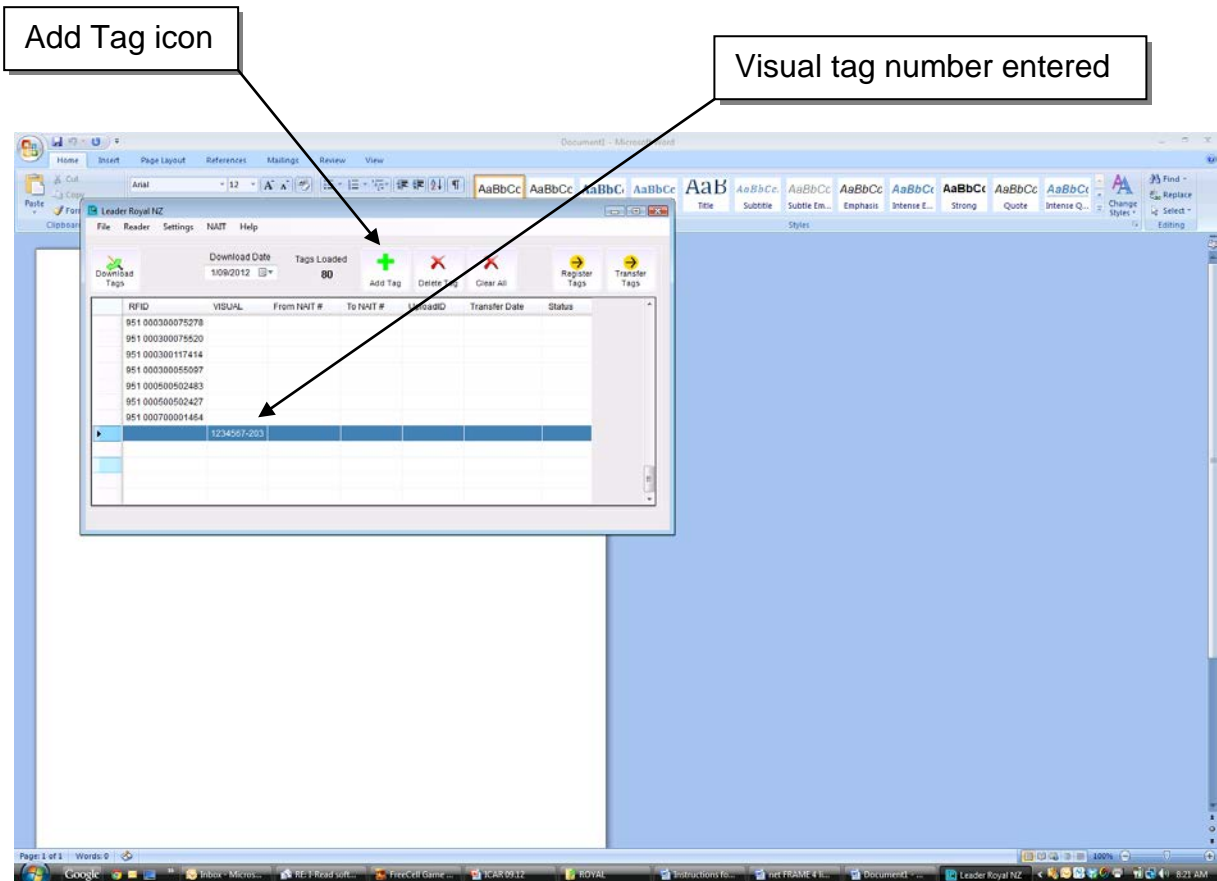
The required location to store the file can then be selected.

DELETING A TAG

If you wish to delete a tag number, simply highlight the tag number from the download list and click on the “Delete Tag” icon. The tag number will be removed from the list. More than one tag can be deleted by using “Control + click” to highlight the tags to delete.

ADDING A TAG NUMBER

If you wish to add the visual number of tag (for example, a non-reading tag), click on the “Add Tag” icon, go to the end of the list and type the visual number into the space in the column headed “Visual”



CLEARING THE TAG LIST

To clear the tag list on the download, click the “Clear All” icon. This will delete the list of downloaded tags but will not clear the memory on the reader. The reader memory is cleared from the menu on the reader.

Once the reader is downloaded and the numbers saved, it is good practice to clear the reader memory before using the reader again.

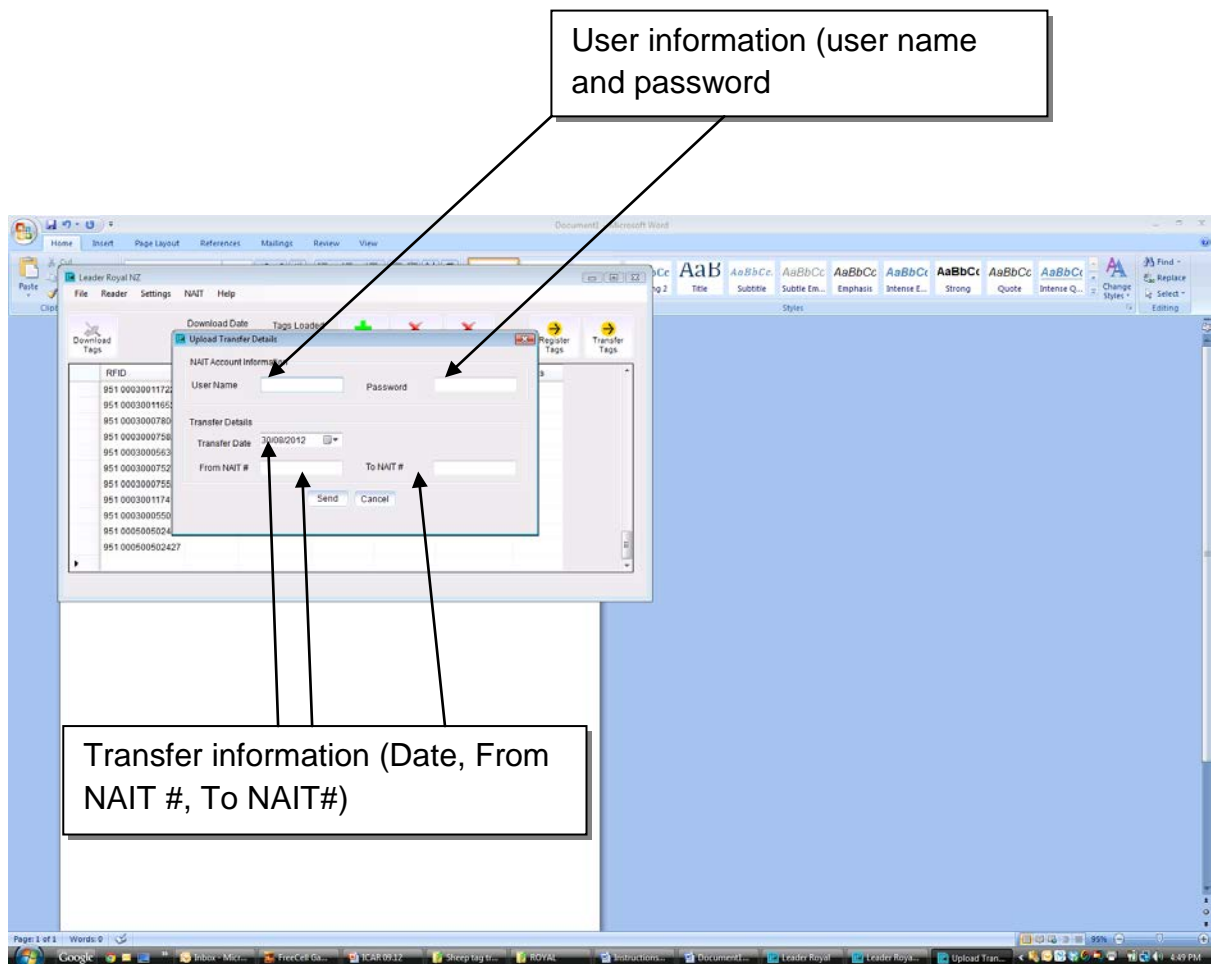
TRANSFERRING ANIMALS

To transfer animals from one NAIT Number to another, read the animals and download the reader. Tag numbers can be added or removed from the list.

When the numbers in the tag list are correct, click on the “Transfer Tags” icon. This will bring up a data box where the NAIT user name and password are entered. This is retained on the system once entered.

The data entry box records the details of the current transfer. The transfer date will default to the current date but can be changed to another date. The “From NAIT Number” and the “To NAIT Number” can then be entered.

Ensure that you have an internet connection and then press “Send”



REGISTERING TAGS

As for Tag Transfers, read the animals and download the reader. Tag numbers can be added or removed from the list.

When the numbers in the tag list are correct, click on the “Register Tags” icon. This will bring up a data box where the NAIT user name and password are entered. This is retained on the system once entered.

The data entry box records the details of the current tag registration. There are two pieces of information that need to be entered:

1. The NAIT Number to which the tags are to be registered.
2. Select the species (cattle or deer) from the animal species drop down box

Ensure that you have an internet connection and then press “Send”

